

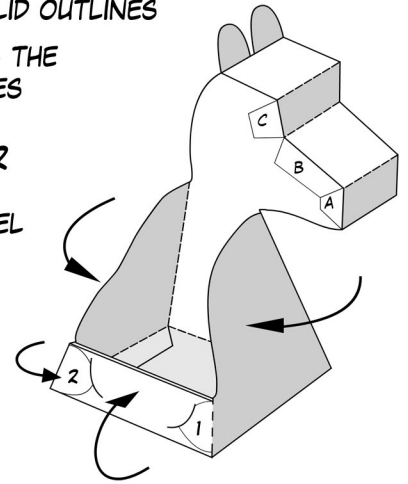
# 3D DOG ILLUSION

COLOUR THE DOG THEN CUT OUT,  
FOLD AND ASSEMBLE (SEE DIAGRAM)

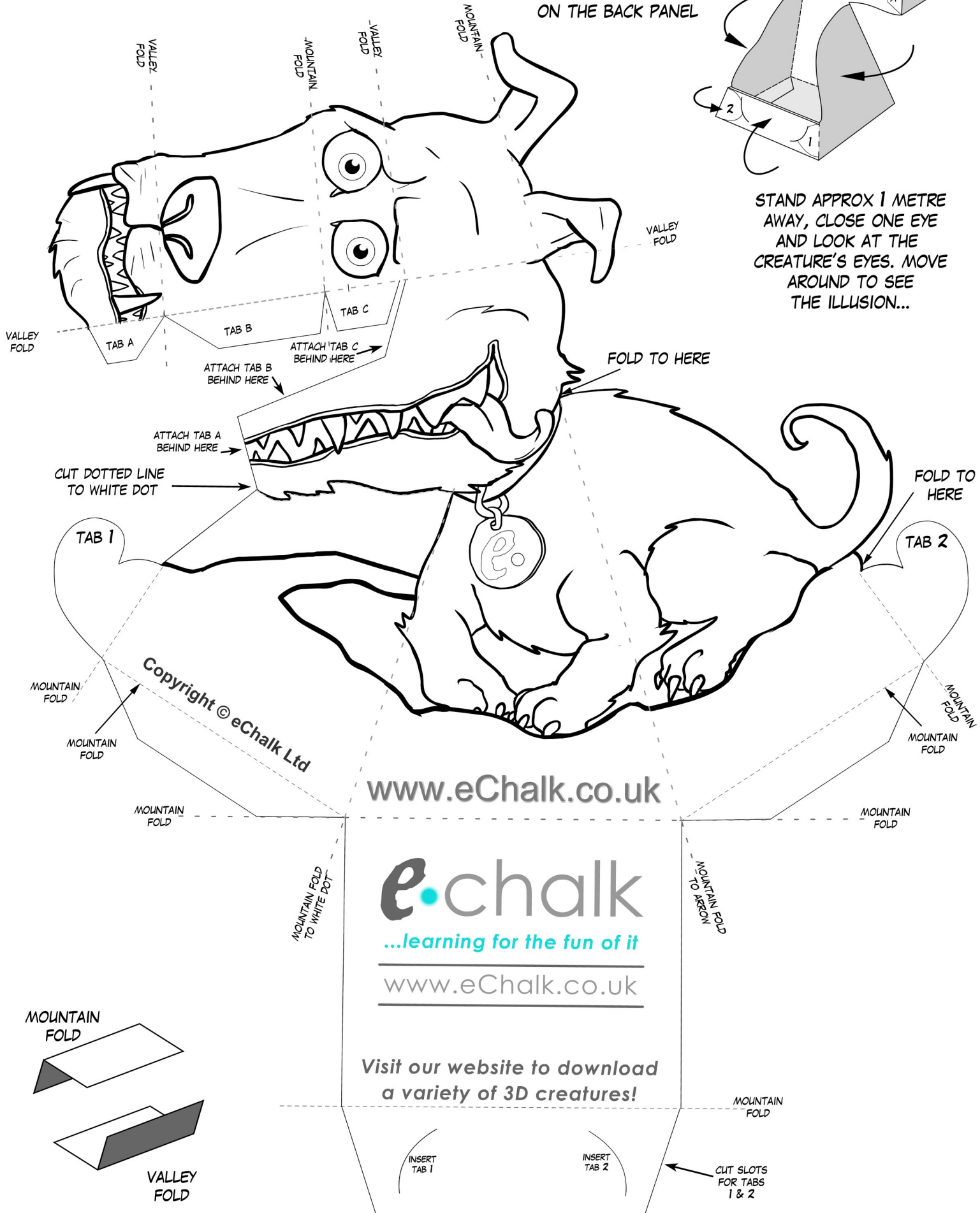
• CUT ALONG THE  
SOLID OUTLINES

• FOLD ALONG THE  
DOTTED LINES

• INSERT TABS 1 & 2  
INTO THE SLOTS  
ON THE BACK PANEL



STAND APPROX 1 METRE  
AWAY, CLOSE ONE EYE  
AND LOOK AT THE  
CREATURE'S EYES. MOVE  
AROUND TO SEE  
THE ILLUSION...



e.chalk

...learning for the fun of it

www.eChalk.co.uk

Visit our website to download  
a variety of 3D creatures!