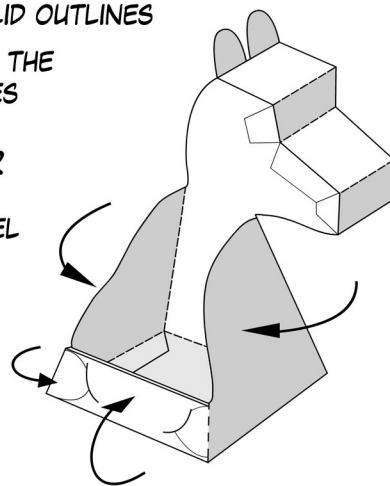


3D ERNIE ILLUSION

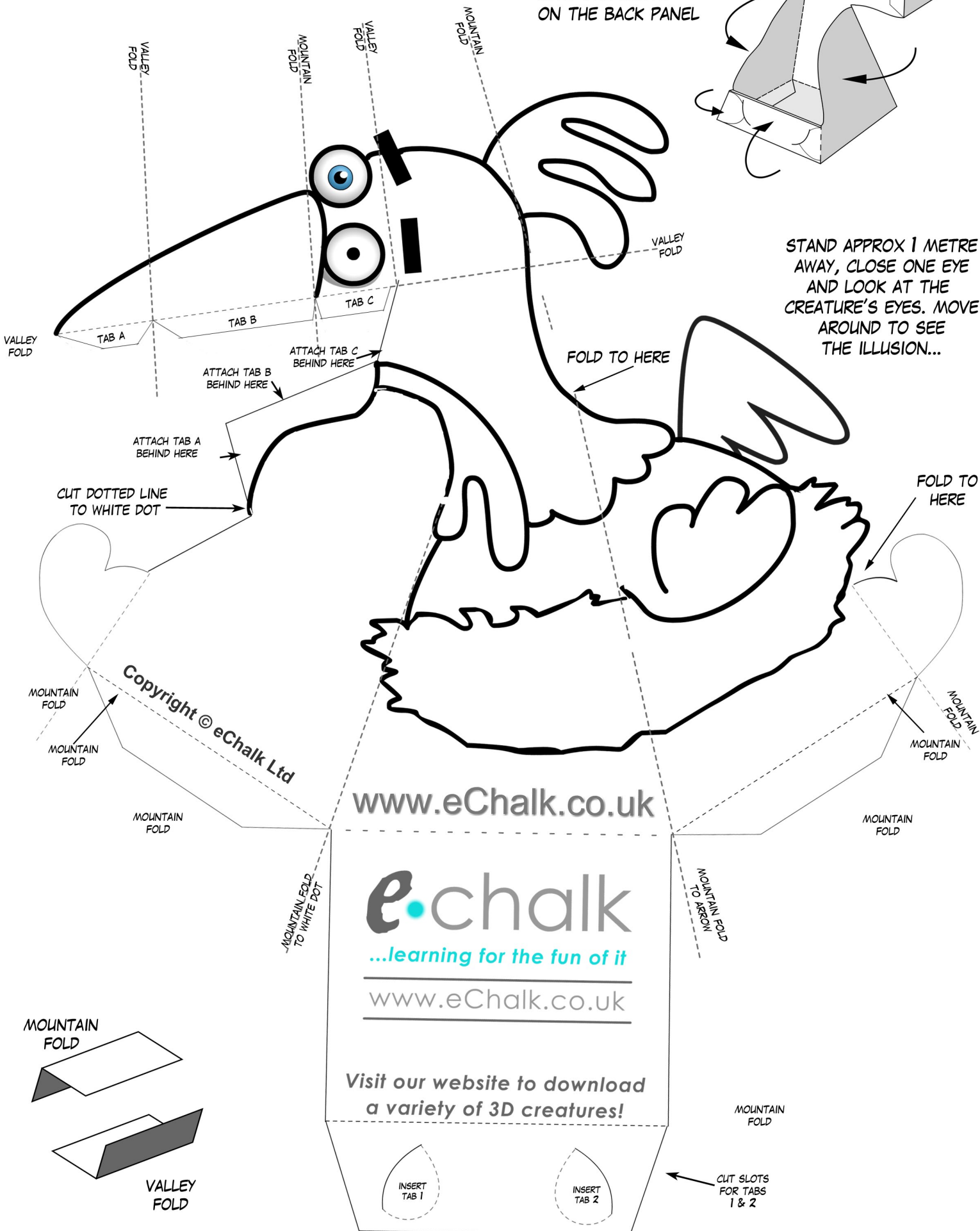
COLOUR ERNIE THEN CUT OUT,
FOLD AND ASSEMBLE (SEE DIAGRAM)

- CUT ALONG THE SOLID OUTLINES
- FOLD ALONG THE DOTTED LINES

- INSERT TABS 1 & 2 INTO THE SLOTS ON THE BACK PANEL



STAND APPROX 1 METRE AWAY, CLOSE ONE EYE AND LOOK AT THE CREATURE'S EYES. MOVE AROUND TO SEE THE ILLUSION...



Copyright © eChalk Ltd

www.eChalk.co.uk

e.chalk

...learning for the fun of it

www.eChalk.co.uk

Visit our website to download a variety of 3D creatures!

INSERT TAB 1

INSERT TAB 2

CUT SLOTS FOR TABS 1 & 2

